

LS857 SHOVEL LOGGER



HIGH PERFORMANCE ON STEEP SLOPES
WITH INCREASED LEVELING CAPABILITY.

Tigercat[®]
Tough • Reliable • Productive



THE LS857 IS A HIGH PERFORMANCE
STEEP SLOPE SHOVEL LOGGER WITH A
UNIQUE PROFILE, PROVIDING INCREASED
LEVELING CAPABILITY AND IMPROVED
CABLE MANAGEMENT FOR WINCH ASSISTED
OPERATIONS. IT BRIDGES THE GAP
BETWEEN CONVENTIONAL GROUND BASED
HARVESTING AND YARDING SYSTEMS.





LIFT AND REACH

- ▶ Four ER® boom system options are available to suit your application, including: shovel clam, feller director, feller director with live heel, and shovel logger with live heel.
- ▶ The 3-mode ER boom system allows the operator to choose between ER, semi-ER and conventional control. The semi-ER function allows the operator to extend the boom on a horizontal plane using a single joystick but retracts the boom with the increased power of both stick cylinders, doubling the pull force.



OPERATOR'S STATION

- ▶ Clear view of the tracks with full-length front window
- ▶ Narrow side posts for optimal visibility to each side
- ▶ Optimally positioned controls and large touchscreen display
- ▶ Climate controlled air ride suspension seat with armrest mounted controls minimizes operator fatigue
- ▶ Fully adjustable, including seat pan fore/aft and tilt, armrest height, and lumbar support positioning
- ▶ Bluetooth® audio, hands free calling, and Sirius ready (North America only)
- ▶ skyVIEW and rearVIEW camera equipped

EXCELLENT SERVICE ACCESS

- ▶ The side opening engine roof completely exposes the top and both sides of the engine, and most hydraulic components. When open, the enclosure roof also acts as a side service platform.



DESIGNED FOR STEEP SLOPES



- ▶ Optimized weight distribution and low centre of mass, along with Tigercat's patented super duty leveling undercarriage, gives the LS857 excellent stability on steep slopes.
- ▶ The unique tail design allows the LS857 to level 26° forward while providing clearance for the tracks and winch assist chains.

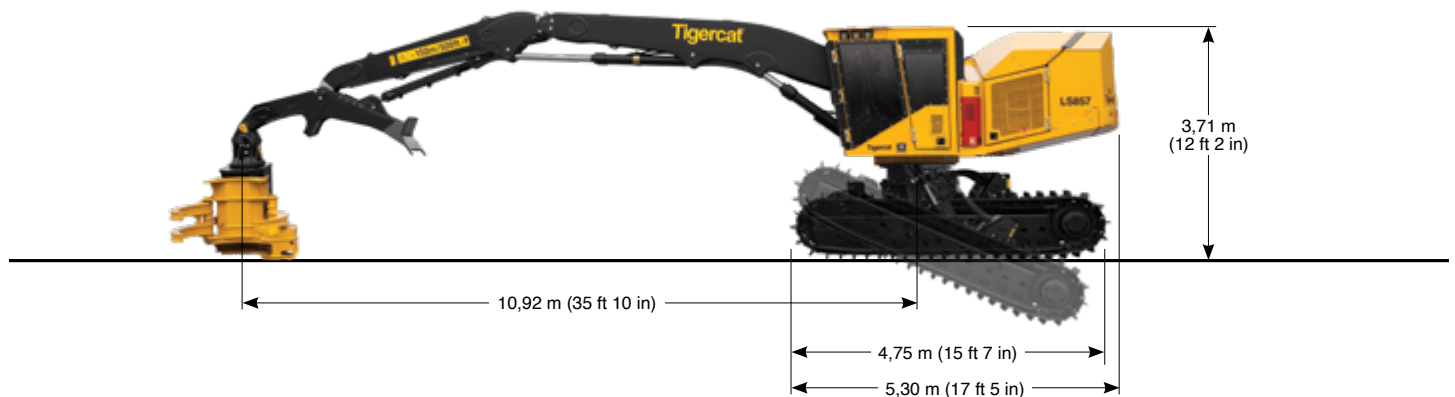
MANUAL AUTO-LEVELING FEATURE

- ▶ When the operator holds the level button, the machine automatically levels the upper frame.
- ▶ The LS857 can be configured with a live heel grapple or as a feller director. The Tigercat 5195 directional felling saw can be mounted directly to the stick boom or on a live heel.



LS857 SHOVEL LOGGER

POWER: 212 kW (284 hp)
 TRACTIVE EFFORT: 367 kN (82,600 lbf)
 LEVELING: 26° forward



SHOWN WITH FELLER DIRECTOR LIVE HEEL BOOM SYSTEM



Scan the QR code then click 'SPECS' for a full list of machine specifications for the LS857 Shovel Logger.

Download the Tigercat App or visit tigercat.com to access the most current machine specifications for all Tigercat machine models.

EMAIL	comments@tigercat.com
PHONE	519.753.2000
WEBSITE	www.tigercat.com
ADDRESS	54 Morton Ave. East, Brantford, Ontario Canada, N3R 7J7
MAIL	Box 637 N3T 5P9